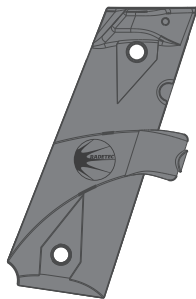


LED ADVISOR

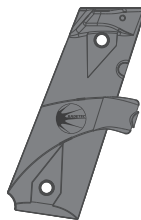
1911



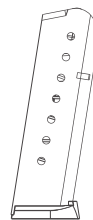
PACKAGE CONTENTS

TOOLS

*not included



LEDADVISOR x1



Magazine x2

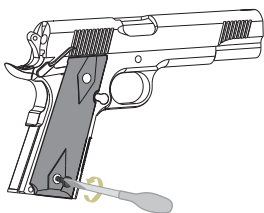
This accessory may not be available in your region.



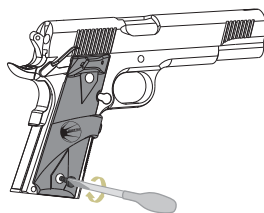
Screwdriver

ASSEMBLY · GUN

Disassemble the original grips



Assemble **LEDADVISOR** grips using original screws and washers



WARNING

Always make sure your firearm is unloaded, no rounds in the chamber and pointed in a safe direction before you disassemble and work on it.

WARNING

This device **DOES NOT** count rounds in the chamber and **DOES NOT** show if there is a round in the chamber. Always make sure your firearm is unloaded and with no round in the chamber.

KNOW YOUR LED ADVISOR

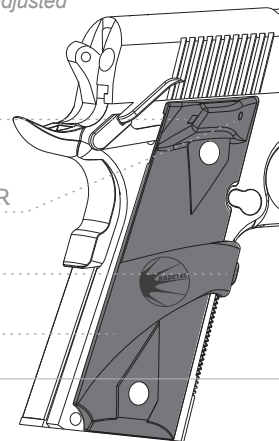
LED Intensity is automatically adjusted depending on ambient light.

LED INDICATOR

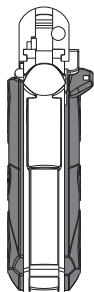
AMBIENT LIGHT SENSOR

CHECK BUTTON

GRIP



LED ACTIVATION EVENTS



Firing the gun or pressing the check button.

MONO-COLOUR 100-012

4/+4 rd. No Light

3 rd. Blinking Red (Slow)

2 rd. Blinking Red (Medium)

1 rd. Blinking Red (Fast)

0 rd. Continuous Red*

TRI-COLOUR 100-010

4/+4 rd. No Light

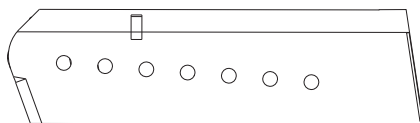
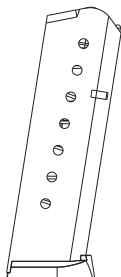
3 rd. Continuous Blue

2 rd. Continuous Green

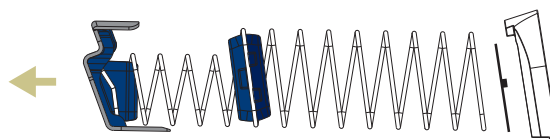
1 rd. Continuous Red

0 rd. Blinking Red*

ASSEMBLY · MAGAZINE



Position of the blue parts on the spring.



Don't remove blue parts. They are necessary for correct device operation.