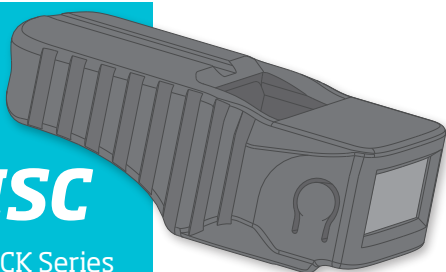
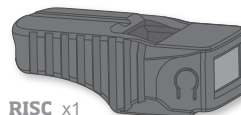


RISC

for GLOCK Series



PACKAGE CONTENT



RISC x1



Cover x1



Screw x2

TOOLS

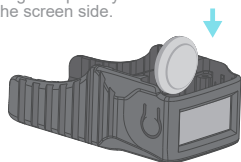
*not included

Screwdriver
PH000Battery x1
CR 1632

1.0 ASSEMBLY

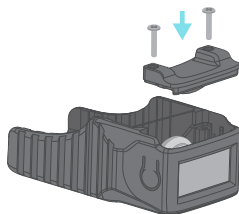
Insert the battery

Negative polarity on the screen side.

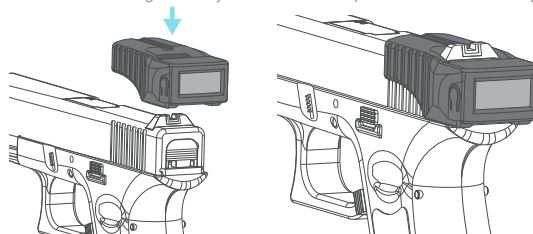
**WARNING**

Always make sure your firearm is unloaded, no rounds in the chamber and pointed in a safe direction before you disassemble and work on it.

Assemble the cover with the screws

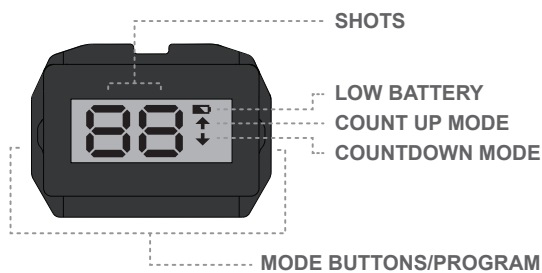


Fix the **RISC** on the slide

Be careful with the magnet when you fix the **RISC**. Compatible with the OEM rear sight.**WARNING**

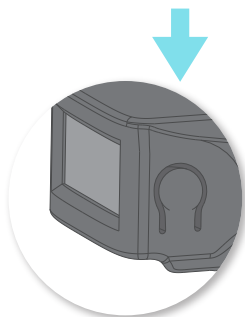
Always make sure your firearm is unloaded, no rounds in the chamber and pointed in a safe direction before you disassemble and work on it.

2.0 KNOW YOUR RISC



BUTTONS CHANGE MODES

Change the mode quickly and intuitively by pressing either button for 1,5 seconds.



3.0 SWITCH ON / OFF



Switch on the screen by pressing either button.



Change to Count-Up or Countdown by pressing either button 1,5 sec.

ON

OR



When shooting, the screen automatically switches on and counts shots.

OFF



When not in use, the device automatically switches off after 20 seconds.

3.1 COUNT UP MODE

Number of shots increases automatically.

SELECT MODE

Press either button for 1,5 sec. until arrow points up.



WARNING

Always make sure your firearm is unloaded, no rounds in the chamber and pointed in a safe direction before you disassemble and work on it.

3.2 TOTAL SHOT COUNTER

Records total number of shots fired while device is installed.

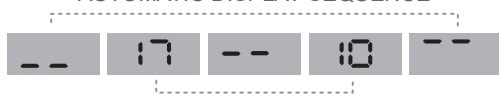
Total Shot Counter mode can be only accessed when in Count Up mode.

SELECT MODE

Press both buttons for 3 seconds.



AUTOMATIC DISPLAY SEQUENCE



1710 Shots

NOTE. To reset Count-Up or Countdown counters press either button for 1 sec. twice.

3.3 COUNTDOWN MODE

Number of shots decreases automatically.

SELECT MODE

Press either button for 1,5 sec. until arrow points down.



WARNING

This device DOES NOT count rounds in the chamber and DOES NOT show if there is a round in the chamber. Always make sure your firearm is unloaded and with no round in the chamber.

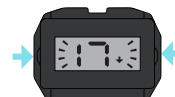
3.4 COUNTDOWN MODE : PROGRAMMING

Programming can only be accessed while in Countdown mode.

Enter the number of cartridges that you want to shoot and when shooting the numbers (LCD) will decrease.

SELECT MODE

Press both buttons for 3 seconds.



LEFT BUTTON
subtracts shots.

RIGHT BUTTON
adds shots.

4.0 FEATURES

2 separate modes
Count up / Countdown

Total Shot Counter

LCD Screen
Only visible to the shooter

Interchangeable battery (CR1632)
Low battery indicator

Ambidextrous **Battery life** 20.000 shots

Weight < 25 gr. **Error rate** < 0.1%

Operational range temperature -20°C / 70°C

Storage range temperature -30°C / 80°C

MIL-STD-810G METHOD 504.1

IP53

COMPATIBLE MODELS Gen3 & Gen4 & Gen5

17/17L/19/22/23/24/25/26/27
28/31/32/33/34/35/37/38/39

Other GLOCK models Gen3&4 could also be compatible.
Stay tuned to our website for updates!